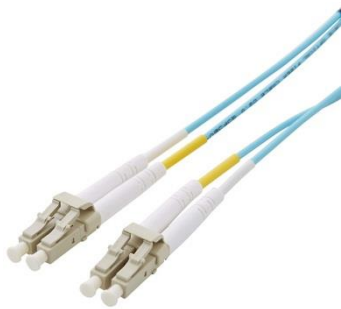


Multimode OM3 Fiber Optic Patch Cords

These Patch cords are made of tight buffered fiber cores having Aramid Yarn as protection below the outer jacket. Construction made of LSZH (low smoke zero halogen) thermoplastic Jacket. Patch cord assemblies are available in OM3 Multimode with multiple types of End Connector Offering.

The fiber cores are bend insensitive and connected with ceramic ferrule to provide ultra-low insertion and return loss. All Patch cords are 100% optically inspected and tested individually. Insertion loss and return loss values are available with every patch cord.



Standards

- ANSI/TIA-568.3-D
- ISO/IEC 11801
- TIA 604 FOCIS 3
- IEC 61300-3-4
- IEC 61300-3-6
- IEC 60874-1

Construction

Core/Clad Diameter (µm)	50/125
Coating Diameter (µm)	250±15
Tight Buffer Diameter (µm)	600±50 (for 1.80mm OD) 900±50 (for 3.00mm OD)
Jacket	Low Smoke Zero Halogen
Jacket Diameter	1.80mm± 0.10mm, 3.00mm ± 0.15mm (Simplex) 4.00 x 2.00mm± 0.20mm, 6.00 x 3.00mm± 0.30mm (Duplex)
Colour of Jacket	Aqua
Strength Member	Aramid Yarn
Central Element	Fiber Core
Connector Housing Colour	Beige
Boot Colour	White
Ferrule	Ceramic
Polishing	UPC
Connector Housing & Boot Housing	Polycarbonate UL94V-0
Cable Retention Force	20N
Bend Radius - Long Term	10 x Diameter of the Cable
Bend Radius - Short Term	20 x Diameter of the Cable

Transmission Data

Fiber Type	Multimode (OM3) 50/125
Operating wavelength range (nm)	850/1300
Insertion Loss (dB)	≤ 0.3

Specifications published in this document are as per the current state of technology. Msys continuously works on improving our products, and reserves the right to change specifications without any prior notice. You may verify product specifications by contacting us on info@msysconnect.com. All Pictures are representation purpose only. Document No.: 64C3EF-YYYY V0 01/2022

© Msys Connect India Pvt. Ltd. All rights reserved.



Return Loss (Back Reflection) (dB)	≥ 35
Mating Durability for 1000 Cycles (dB)	≤ 0.2
Repeatability (dB)	≤ 0.1

Environmental

Transport and Storage	-20° to 75°C
Installation	4° to 50°C
Operation	-20° to 75°C
Humidity	10% to 90% RH

Compliances

Flammability	IEC 60332-1
Smoke density	IEC 61034
Acid gas	IEC 60754-1

How to Order

Description	Product Code
Fiber Optic Patch cord, OM3, Aqua	6413EF-3YYY

E, F denotes Type of Connector (E≤F): 0 = SC, 2 = LC, 4 = ST

YYY Denotes Length in Meters

Type (EF) Length (YYY)	3mtr (003)	5mtr (005)	10mtr (010)
LC-LC	641322-3003	641322-3005	641322-3010
SC-LC	641302-3003	641302-3005	641302-3010
SC-SC	641300-3003	641300-3005	641300-3010
SC-ST	641304-3003	641304-3005	641304-3010
LC-ST	641324-3003	641324-3005	641324-3010
ST-ST	641344-3003	641344-3005	641344-3010

Other Lengths and Types are available upon request.